

# CLeeod

life inside out.

# c o n t e n t s

04

introducing cred

05

cred philosophy

07

sister companies

09

cred management structure

12

our projects

13

CLM

21

castle gate

24

ever



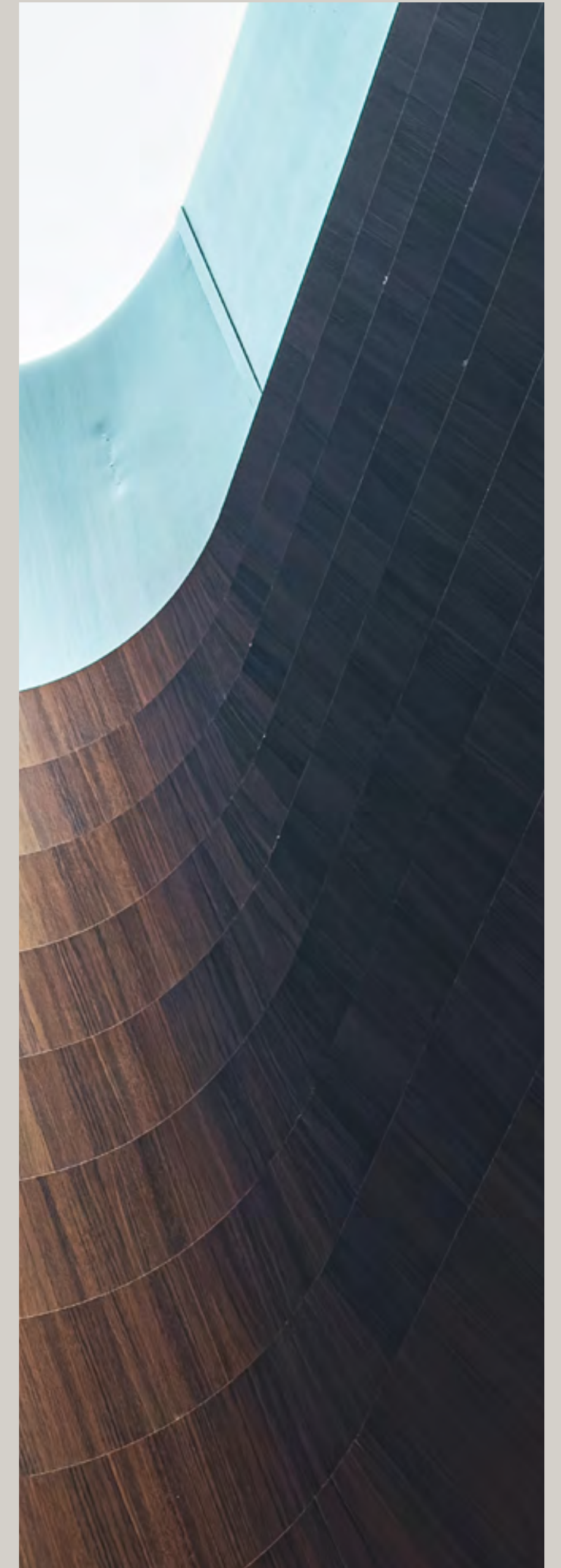
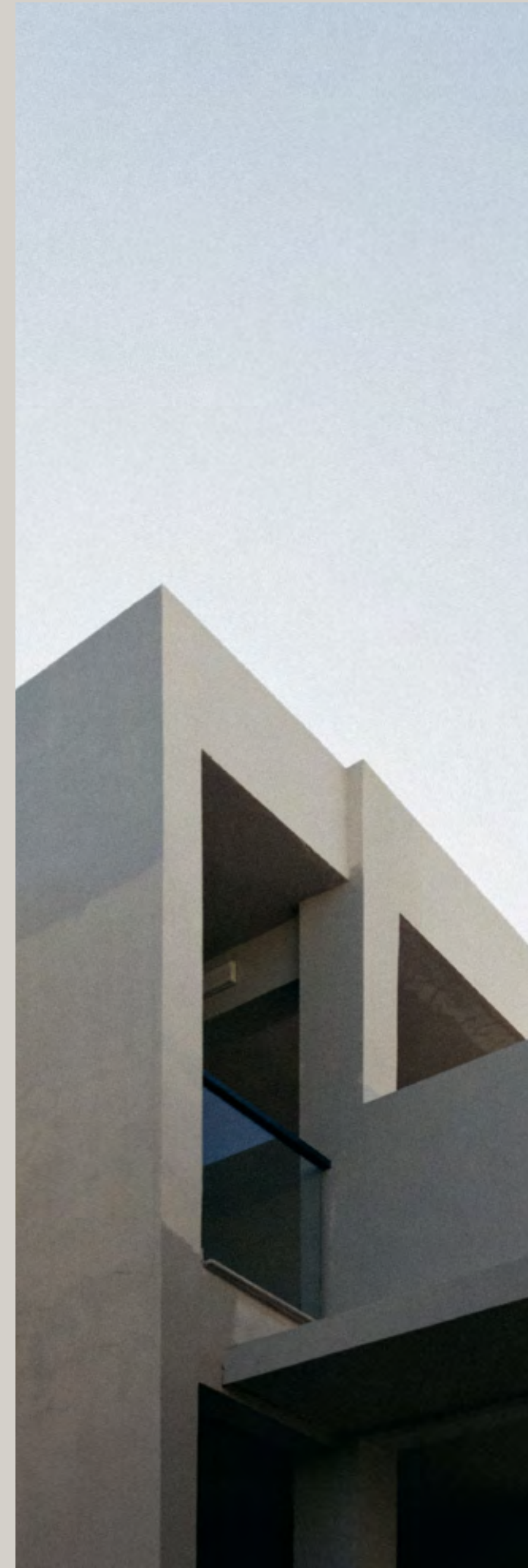


## Credibility, one step ahead.

At Cred, credibility is our number one priority when it comes to introducing world-class communities of utmost value. The company was launched with a progressive philosophy that mirrors the aspirations of modern lifestyles to set a benchmark in integrated living.

Cred's journey relies on modern designs and timely delivering of remarkable projects across Cairo that blend the best in living, leisure, business and entertainment under one comprehensive roof to redefine the true meaning of life inside out.

Introducing





**Cred** philosophy.

Benchmark communities  
**with credibility at heart.**

Cred adopts a deep, inward philosophy that puts clients at the heart of its ever-evolving vision. The company constantly invests in in-depth research, as well as market analysis to bridge the gap between dreams and reality by unlocking its community's aspirations while reflecting them in an outer development that truly mirrors modern lifestyles.

**Cred is an exclusive invitation for communities to seamlessly belong and thrive where unmatched integration is alive.**





## Credibility

Cultivating a culture of transparency and trust by living up to our clients' expectations, delivering iconic developments with the highest return on investment where timely delivery and quality are key.

## Innovation

Leading with creativity and visionary originality to craft benchmark communities in prime locations across Egypt that enrich the lives of its residents in every aspect.



Cred DNA

5

## Integration

Empowering our communities to grow closer to their contemporary needs, thanks to a holistic vision that melds the best in nature, living and leisure under one integrated roof.

## Quality

Offering unrivaled standards of quality spanning the entire construction cycle from A to Z by rising to new heights of excellence in every delivered detail.

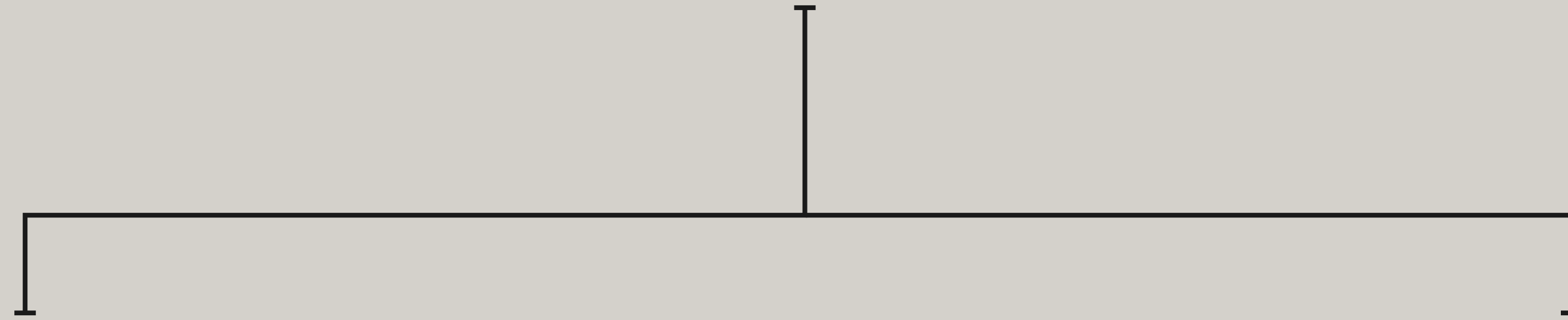




**Cred Sister Companies**



# Sister Companies



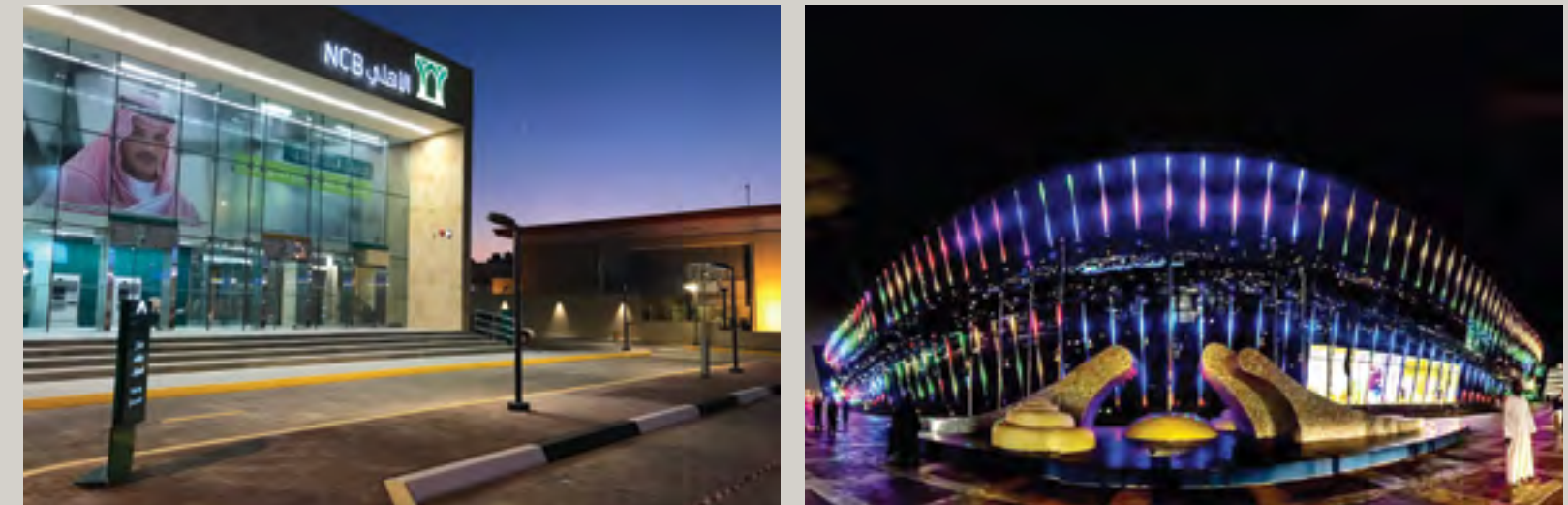
## MIG

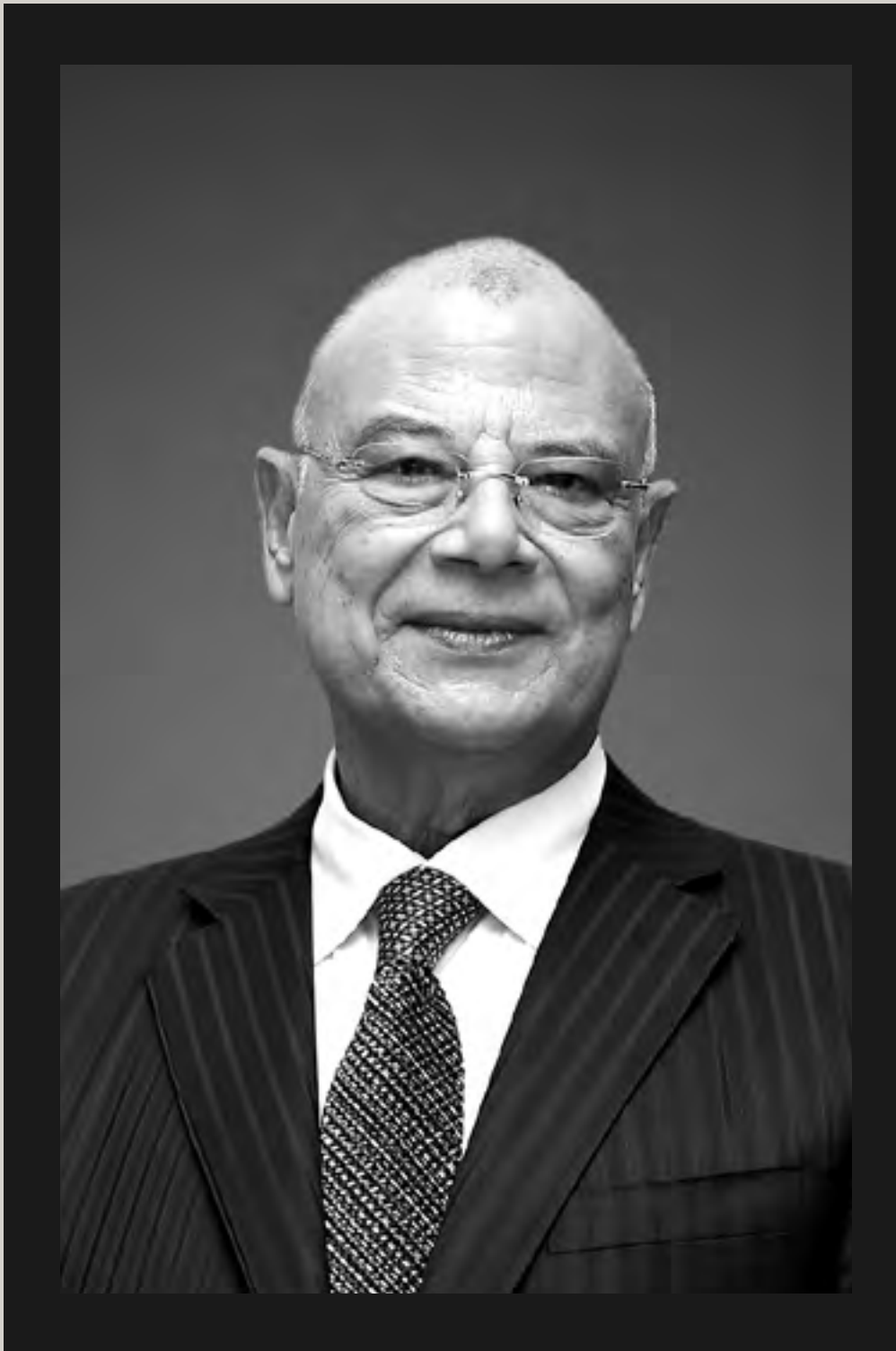
MIG is a group of six integrated firms and is designated as a Grade A company by the Egyptian Federation for Construction & Building Contractors. We have more than 20 years of experience in executing prestigious projects throughout Egypt; where we have built a reputation of delivering projects on time, within budget, and with an outstanding level that represents actual value for our clients.



## ABC

In 1980 Ashi & Bushnag Co. LTD. It was found in Jeddah in the kingdom of Saudi Arabia focusing on civil construction, maintenance, electromechanical and trading as major business activities. Ashi & Bushnag Co. LTD.





### Chairman

---

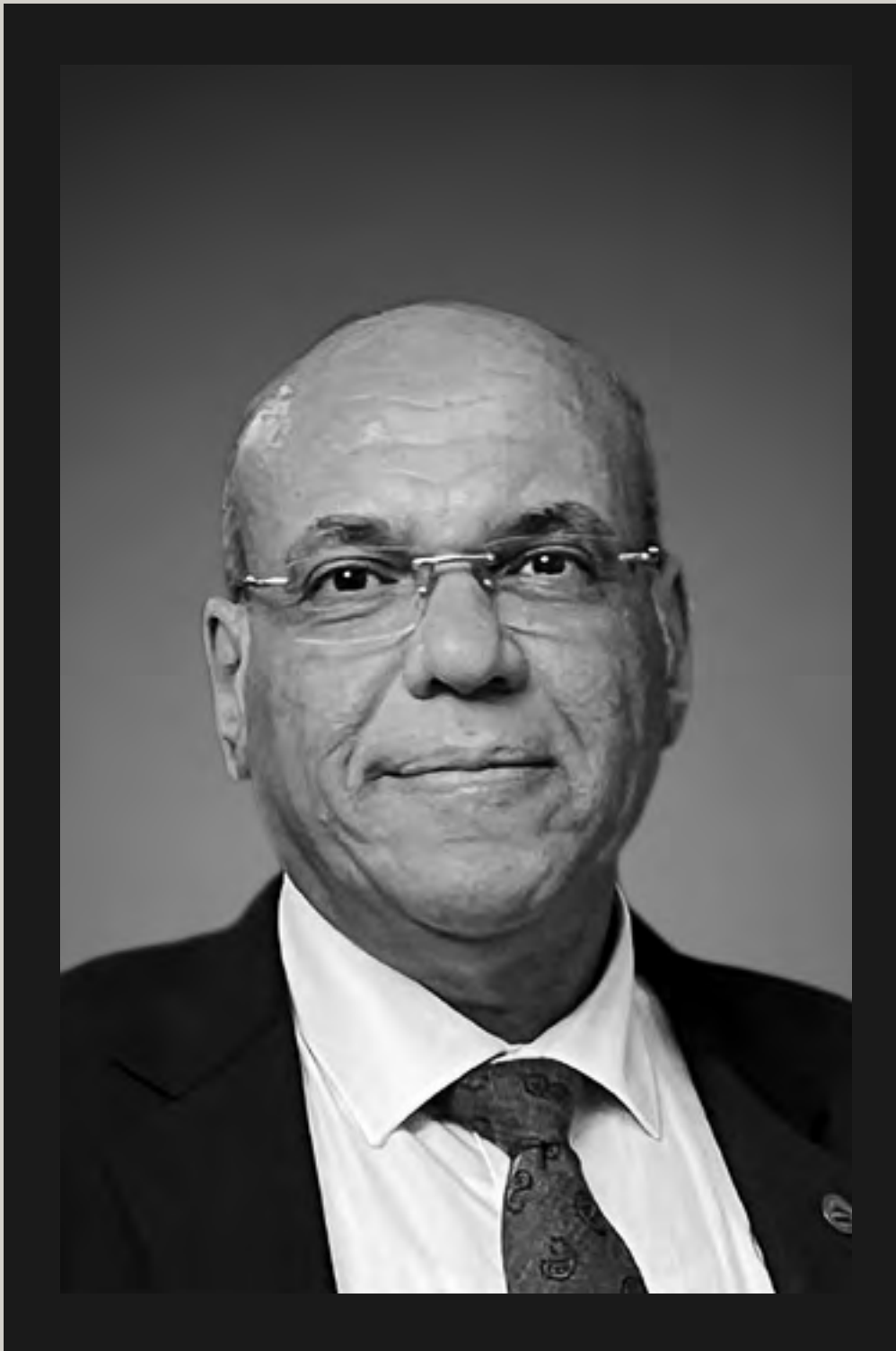
Eng. Taha Mansour

In 1980 Ashi & Bushnag Co.ltd. Was founded in Jeddah kingdom of Saudi Arabia focusing on civil construction, maintenance, electromechanical and trading as major business activities. “Having started out in 1997 as a construction and engineering company as well as a solutions provider for all construction-related services; within big steps, MIG expanded with the inauguration of Cred Company, MIG Woodwork Company, MIG Infrastructure, and MIG Electromechanical.

Masrya International Group [MIG] companies have since then achieved major growth by further expanding into offering variable turnkey construction solutions. We are quickly responding to market trends. Increasingly, the Egyptian government is looking forward towards positioning the private sector as a key element to the growth of economy; through developing, financing, constructing, and operating different sorts of infrastructure projects.

We are proudly putting together and integrating all the needed resources and services for such projects. As a result, MIG stands today for excellence in developing and operating infrastructure facilities.”





### Managing director

---

Eng. Mohamed Edrees

“Being with Cred entails a lot of hard work and commitment, not to mention the mutual trust built between me and the overall corporation and the responsibility of being up to such trust in our management processes. Since I joined MIG in 1997, I have resolved to the secrets of its success and hereby would like to share them with you. They are the key factors which keep MIG one of the leading establishments in contracting here in Egypt.

Cred has gone a long way and will continue to soar high and prosper in providing top-notch services to all of our clients; evolving in the construction industry by complying with international standards and by developing our approaches to utilize world technologies. Being the Managing Director of MIG, I ensure you that we give our utmost dedication and commitment to all of our clients; where every client of MIG’s can rest assured of acquiring highly efficient services no matter the scale of project, the kind of service, or the duration of its achievement.”



### CEO

---

Eng.Ahmed Taha Mansour

Cred is a well-established Egyptian enterprise; that's immensely proud of the important role its team plays in the economic growth of our country. We have been working hard for the construction and realization of a better version of the future of our fellow citizens. At MIG, we are keen on blending the valuable experiences of our founders, with the powerful rise in technologies related to our work. For that, we are always open for innovative ideas in the contracting and construction engineering markets. We encourage our staff – our collaborators in every success we have had so far – to develop new ways to execute their tasks; and they never fail to amaze us with the solutions they come up with. While we learn from our past, we are always looking forward towards advancing in the future.

We look forward to new projects and new opportunities that add to cred, MIG and the overall Egyptian market. Above all, we are always looking forward to making life better for all.



# Projects

Iconic realities  
**shaping the future.**



# CEM

NEW ADMINISTRATIVE CAPITAL





**CLM sets new standards in signature living in Cairo's New Administrative Capital, thanks to a sustainable vision that surrounds residents with 81% of uninterrupted green views for timeless peace of mind while providing a self-sufficient community that relies on solar energy with 70%.**

The project is an exclusive invitation to enrich everyday ordinary by bringing residents closer to a world-class spa, an elegantly appointed club-house, football and tennis courts, a cutting edge gym, as well as safe jogging and biking tracks for a healthier lifestyle at their doorstep. CLM's masterplan maximizes views on open, lush spaces, seized through 3 building types on different elevations with flexible spaces starting from 120 m<sup>2</sup> to 285 m<sup>2</sup>, powered

by an underground parking and accessibility passages for ultimate convenience.

Castle Gate places its community's life in the heart of serenity and entertainment with a strategic location in the lively R7 zone, four seamless entrances for easy accessibility, but most importantly direct access to a spirited commercial strip inclusive of world-class restaurants, cafes, medical care and business excellence.



# A location like no other.

**CLM** is located in the New Administrative Capital at **R7 zone** beside Coventry British University while being:

**5 Mins** from the green river

**5 Mins** from the regional ring road

**10 Mins** from the governmental district

**10 Mins** from the money & business district

**10 Mins** from cairo sokhna road

**25 Mins** from future city

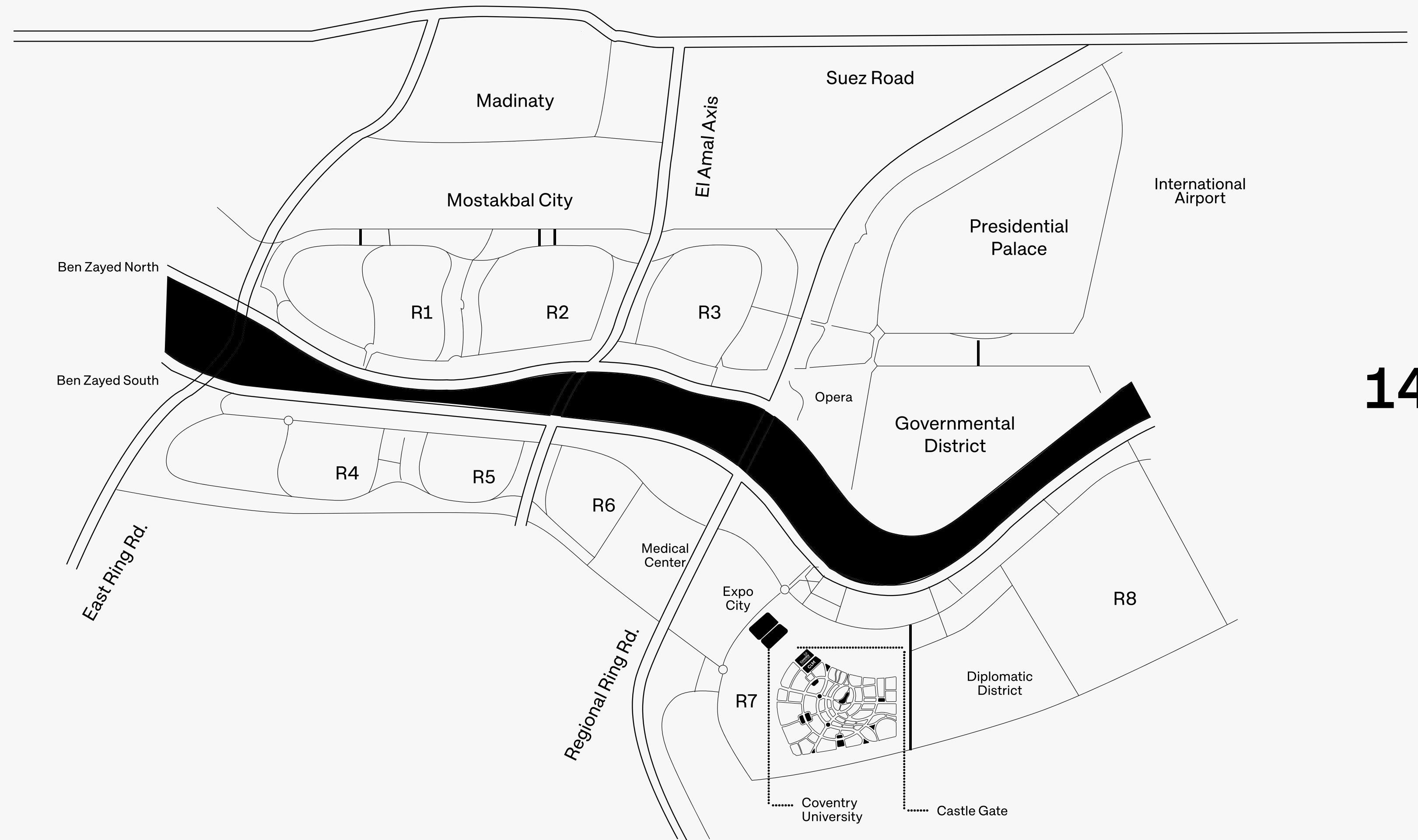
**30 Mins** from new cairo

**35 Mins** from madinaty

**CLM** neighbours the monorail station of Coventry British University, which facilitates our residents' movements from and to our community. The monorail track is highly accessible while connecting Cairo from the stadium station with New Cairo and the New Administrative Capital including; Mohamed Bin Zayed, Al Masa Hotel and the Ministries District.

CLM  
Neighbourhoods

Coventry british  
University  
Green river  
Expo city  
The cathedral





# Masterplan



Disclaimer. All renders, floorplans & specifications are conceptual only and subject to change. All dimensions are approximate and may vary with actual construction. Items of finishing, furniture & decorations are conceptual only and are not necessarily included in the unit.



















# CastleGate



NEW ADMINISTRATIVE CAPITAL





## Castle Gate commercial project.

Expertly envisaged as a lively commercial nexus and a business focal point that caters to contemporary lifestyles, Castle Gate is an iconic mixed-use development that empowers communities to work and entertain in the beating heart of the New Administrative Capital, thanks to cutting-edge administrative, medical and commercial spaces. Every detail in the project has been carefully planned, utilizing an innovative C-shaped scheme that invites

magical scenery, as well as natural daylight inside office spaces while providing an unmatched indoor-out experience that balances between professional life and uninterrupted recreation, on repeat. Strategically located in R7 Zone, Castle Gate artfully envelopes communal points with lush seating areas to take in sweeping views of breathtaking greenery and tranquil fountains, evoking a tranquil ambience while offering an underground parking for car-free experience.

**The elemental edge of the project lies in a progressive alchemy that blends signature shopping experiences, exceptional dining and retail options under one integrated roof, transforming it into a one-of-a-kind commercial experience where timeless memories are born.**







ever.





**Crowning a prime location on 26th of July Corridor, ever is an ever-evolving vision of seamless integration and signature living on cascading levels, designed to enrich every modern lifestyle looking to settle, enjoy or simply thrive at work.**

The mixed-use development is artfully planned on 40 acres of lush land to introduce a variety of upscale housing types and commercial experiences that promise to last a lifetime.

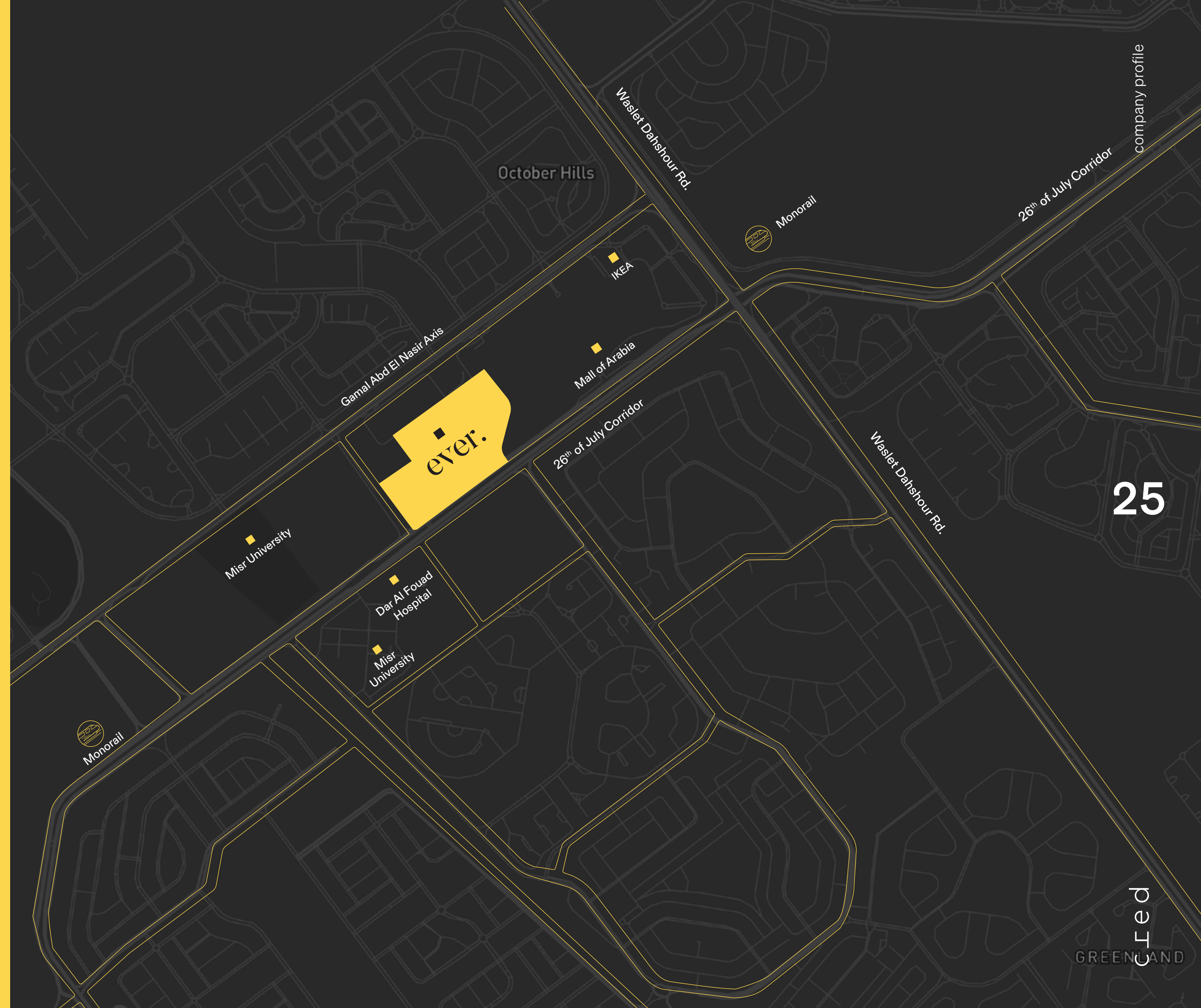
Crisp and contemporary in design, Ever's first phase boasts a mix of sleek and minimalist low-rise residential units (G+5), in addition to (G+9) administrative offices and clinics, directly facing the central monorail station. Phase two will embrace contemporary high-rise buildings (G+11).



**Strategic location directly facing the monorail station for seamless accessibility.**

Masterplanned with ultimate convenience in mind, Ever is ideally located in the heart of Sheikh Zayed, directly on 26th of July Corridor, neighboring Mall of Arabia and Misr University of Science and Technology.

The project crowns a prime spot in 6th of October while offering seamless access to all vital highways and main roads in Cairo.



Location map





Disclaimer. All renders, floorplans & specifications are conceptual only and subject to change.  
 All dimensions are approximate and may vary with actual construction. Items of finishing, furniture & decorations are conceptual only and are not necessarily included in the unit.













Clubhouse



















Commercial admin





Commercial admin





Commercial admin



# CLINIC

HEALTH CENTER







Clinic



**New Cairo Coming Soon**



cred

16533

cred-eg.com